



# FRESH CATCH OF HISNA

Monthly Newsletter of the Hawai'i Student Nurses' Association

## NEWS & FEATURES

Presidential Address  
**PAGE 1**

What's new in Hawai'i  
SNA Chapters?  
**PAGE 2-4**

Student Polls  
**PAGE 5**

August and September  
Awareness Month  
**PAGE 6-7**

Stay up to date with  
HISNA!  
**PAGE 8**

## Presidential Address

Aloha everyone,

Welcome back to school! Can you believe how fast Summer break went by?

I hope you all had a nice break and are ready to get back into that nursing school grind!

The HISNA e-board is looking forward to provide in-person opportunities for you this academic year. We will also prioritize your safety and make any adjustments that needs to be made to decrease the number of cases in the State of Hawaii.

Again, welcome back and work hard!

Mahalo,  
Angelique Mara  
HISNA President



# What's new in Hawai'i SNA Chapters?



## Chaminade University of Honolulu

- Newly elected officers transitioning to their positions for the upcoming school year
- Planning and strategizing recruitment and events ideas for the fall 2021 semester
- Officers and faculty communicating and working together to organize meeting times and make needed revisions of organization constitution and bylaws

# What's new in Hawai'i SNA Chapters?



## Hawai'i Pacific University

- HPU SNA endorsed benefits and opportunities of chapter membership to incoming nursing students during the school's annual **New Student Orientation**
- **Hosted a booth during Club Carnival:**
  - Club Carnival is a biannual event that takes place at Aloha Tower Marketplace. It features booths by HPU's Registered Student Organizations (clubs and organizations) within the first two weeks of each semester.

### *Your SNA Executive Board 2021-2022*



**President**  
Laila Valdez  
lvaldez8@my.hpu.edu  
she/her/hers



**Vice President**  
Menjam Tamang  
mtamang1@my.hpu.edu  
she/her/hers



**Secretary**  
Brianna Ganal  
bganall@my.hpu.edu  
she/her/hers



**Treasurer**  
Jaylynn Subia  
jsubial@my.hpu.edu  
she/her/hers



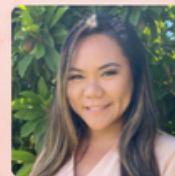
**Co-Treasurer**  
Sheila Cabasag  
scabasag1@my.hpu.edu  
she/her/hers



**Director of Communications**  
Jethra Chryseis Agbayani  
jagbayani1@my.hpu.edu  
she/her/hers



**Level/NSNA Representative**  
Alana Galloway  
agalloway1@my.hpu.edu



**HISNA Representative**  
Joan Cayaban  
jcayaban1@my.hpu.edu  
she/her/hers



**Medical Mission Lead**  
Hailey Tuesday  
htuesday1@my.hpu.edu  
she/her/hers

Photo credit: Joan Cayaban

# What's new in Hawai'i SNA Chapters?



## University of Hawai'i at Manoa

- **New Student Orientation** was held on Thursday, August 19, 2021, through Zoom
- **Student Nurses' Association Executive Board of Directors** have been announced for the 2021-2022 AY



*Photo credit: Menjam Tamang*



# Student Opinions

## What is your new school year resolution?

"To not procrastinate"

"Improve my time management skills"

"Graduate!!!"

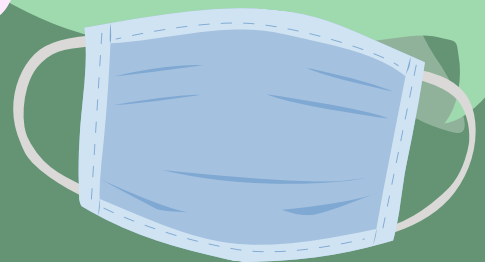
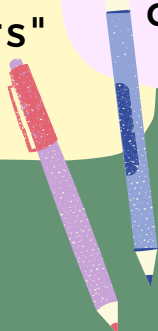
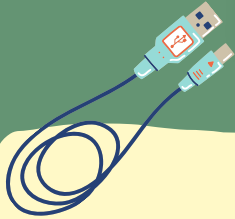


## What are your school bag essentials?

"Laptop and phone chargers"

"My planner!!, wallet, keys, Macbook, hand sanitizer, snacks, charger and pens"

"Hand sanitizer and extra masks"



# August Awareness Month

## National Immunization Awareness Month



*@hawaii\_gna*

**MEASLES, MUMPS, RUBELLA (MMR), VARICELLA, INFLUENZA, DIPHTHERIA, WHOOPING COUGH, TETANUS (DTAP) HEPATITIS A & HEPATITIS B, POLIO, ROTAVIRUS, HPV, HIB, PNEUMOCOCCAL, ZOSTER, COVID-19.**

# September Awareness Month

NICU AWARENESS MONTH

RESILIENT

@hawaii\_sna

Image: iStock

# Stay up to date with HISNA!

---

INSTAGRAM



@hawaii\_sna

FACEBOOK



@HI SNA

WEBSITE



hisna.org